

Dear Sir / Madam

We were unable to attend the recent village consultation event on public / green spaces last weekend, so am hoping that our comments below can be taken into account. We note there is a meeting this evening which includes an item relating to Sunday's event.

Having moved to Farnsfield around a year ago, the quality and accessibility of the green spaces was definitely one of the deciding factors when choosing where to move to. The evidence of good management of green spaces coupled with a clear desire to ensure that green spaces also provide vital space for nature is most welcome.

We believe that the balance between recreational use and biodiversity enhancements is right: sports pitches and other recreational areas are well used and well maintained yet there is still plenty of space for more informal green spaces to be enjoyed in different ways, from a simple village walk or dog walk (the Millennium Wood is a particular favourite) to greatly valuing the areas of wildflowers providing nectar for pollinators and noting efforts to increase biodiversity e.g. bird / bat / insect boxes. The inclusion of more informal and wilder green spaces also reminds us that we do live in the countryside, providing valuable habitat linkages into the wider countryside itself.

We are aware that much of the work carried out to enhance our village's green spaces for nature is undertaken by volunteers so would like to extend our thanks to everyone involved. We welcome the Parish Council continuing its current approach to management of green spaces to include space for nature and would not like to see any of the current initiatives reduced or stopped.

We hope that you will be able to include these comments within the consultation.

.....

Green Spaces: On green spaces more generally, I am a regular user of The Acres, Millennium Woodland, Wilson's Field and the allotments, and my husband is an allotment holder which I also use.

Since May 2023 these areas have been increasingly neglected under the banner of “biodiversity”. The promised consultation on green-space management now appears to be, being absorbed into this general “views” exercise. There have been many complaints to Council and on Facebook from residents.

Millennium Woodland and Hadleigh Park Copses remains unsafe in places due to poor visibility, a lack of compliance with the 10 year management plan and general upkeep. The copse at the entrance to Hadleigh Park has again deteriorated, recently requiring NSDC intervention from a public health aspect due to reports of the area being used as a public toilet. The undergrowth had previously been removed due to ASB, drug use and fires being set. (fully documented and risk assessed in 2019)

Access to Acres: Additionally, the Council’s covert approach to addressing access to The Acres is a serious issue. Pre-application advice and a detailed PC report submitted without any delegation of authority from Full Council, additionally the report contains inaccurate information that is both misleading and wrong and as a result the advice cannot be relied upon. Another major Capital project being progressed contrary to the law by this council.

.....

We are writing to formally express our strong disapproval of the proposed relief road on Parfitt Drive.

We believe this proposal is not compatible with Nottinghamshire County Council policy, particularly the objectives set out in the Nottinghamshire Local Transport Plan (LTP4). The LTP places emphasis on reducing

reliance on private vehicles, promoting sustainable and active travel, protecting residential environments, and ensuring that transport schemes deliver demonstrable value for money. A new relief road through an established residential area appears contrary to these objectives, as it risks increasing traffic, noise, and environmental harm while offering limited strategic benefit.

In addition, we believe the proposed scheme conflicts with Nottinghamshire County Council's approach to open spaces and green infrastructure. The County Council's Green Infrastructure Strategy and Open Space policies seek to protect existing open spaces, prevent unnecessary loss of green areas, and ensure that development conserves and enhances environmental assets, biodiversity, and community well-being. The use of land on or near Parfitt Drive for a new road would result in the erosion of valued local open space, undermining these policy aims and setting an unwelcome precedent for the loss of green areas within the village.

Furthermore, the estimated cost of this scheme is disproportionate to any potential benefit. At a time of increasing financial pressure, such an exorbitant expenditure would be far better directed towards projects that clearly enhance village life and deliver tangible community value. These could include improvements to local amenities, maintenance of existing infrastructure, or community-focused initiatives such as enhancements to the village Christmas lights and other public realm improvements.

We respectfully urge the Parish Council to reconsider its support for this proposal and to ensure that any future infrastructure schemes are fully aligned with County Council transport and open space policies, represent responsible use of public funds, and genuinely reflect the priorities of Farnsfield residents.

.....

I would like to apologise to the Parish Council for not popping in to this afternoon's event but family commitments made it impossible. However my husband and I have discussed the areas mentioned and would like to pass on our thoughts.

Firstly, we both feel the road extension from Parfitt Drive is too costly and completely unnecessary. The track running behind Parfitt Drive is adequate for the volume of traffic. We think it could also add additional

hazards to children and animals in the area. Too often we see cars driving at speed and it would be all too easy for an accident to happen.

Generally, we think that the needs of children and teenagers are very well met with amenities spread around the village. The only thought we had was that both Parfitt Drive and Squirrel play parks are very exposed to the sun. With increasingly long, hot summers perhaps some shade over the play equipment would be beneficial.

The other amenities in and around the village such as the Millennium wood are great and we can see no reason for change. However, the older generation aren't always considered and one area that may provide a resource for them is at the far end of Squirrel park. Would it be possible to put in some seating, flower beds and shade for older people to meet up or pause for a while whilst out using facilities in the middle of the village.

I don't know if it is possible to put a halt to big spending in the village. We are lucky to have so many resources. Our grandson keeps trying to persuade his parents to move here because he thinks it is wonderful. Instead could the money be used for smaller projects that would benefit everyone such as putting a bench on the green space between the trail and Meadow Close or the area off Brickyard Lane. Again this gives people the chance to pause and enjoy our green spaces.

We also have a couple of unrelated questions that you may be able to answer. Is it possible to have a proper bin put next to the dog waste bin near the school. In windy weather the current bin is often useless. There is often an accumulation of rubbish alongside school up to the trail.

We would also like to know how to find who owns the strip of land between the new Pasture Way estate and Greenvale. We, along with other residents, have been doing what we can to maintain the hedgerow and clear leaves. The build up of leaves is now starting to choke the hedgerow and really need removing as happens in other areas of the village. It would be helpful to know who to contact.

.....

I can't make the meeting on Sunday but just to let you know how important I find green spaces for mental wellbeing.

I mainly use the Millennium Wood for local walks and Hadleigh park and Lady Goodwin Park for entertaining grandchildren - picnics, games, play areas etc.

.....

am writing on behalf of a Farnsfield citizen, he is unable to attend In person on Sunday to the consultation regarding the Green spaces in Farnsfield.

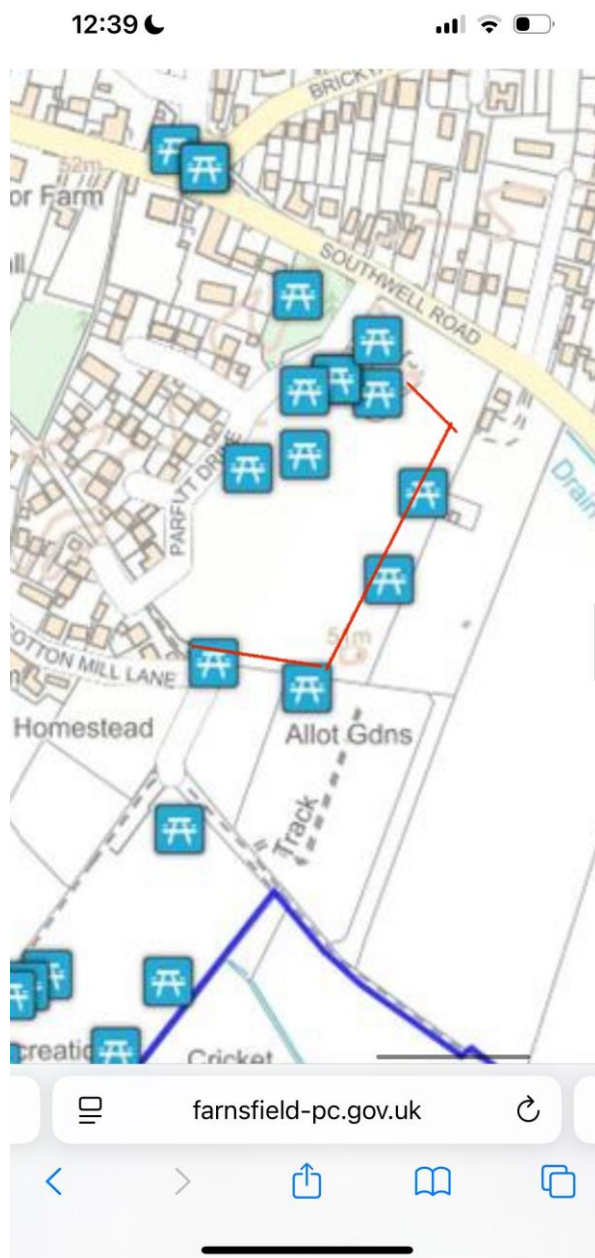
As discussed we have noticed a lack of pathways on the hadleigh park site, which is a shame as it has disabled parking spaces, but beyond that, the site is inaccessible for individuals who rely on wheel chairs, walkers and who need flat, steady ground to walk on.

Which is a shame as it seems to be the most regularly used green space in the village. On top of this, the party in the park is also situated there, which is just not accessible for wheelchair users.

We would like to propose a pathway of sorts around the perimeter of the site. When I walked through the park I noticed areas which are traversed more than others; which is the east side of the park, where there is a football field. No doubt this is where spectators watch teams play.

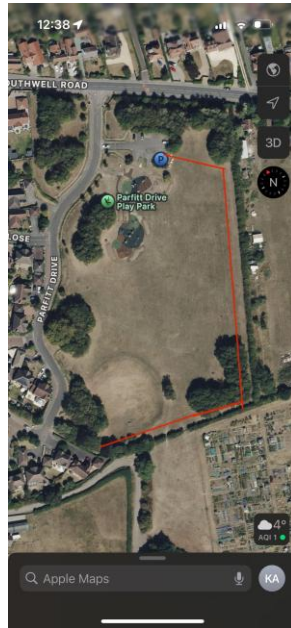
We think it would be beneficial to link the car park, with the section of the site so benches can be accessed, with the possibility of linking the pathway with the NCC footpath which connects to Parfit drive. This would create a loop of the site. I have attached some crude drawings from maps to illustrate what we would like to see.

I am unsure which football teams use this site and their level within the football pyramid and if they are FA affiliated, but I would suggest that there is an investigation to see if funding for 'spectator hard standing' is available from funders such as the football foundation. If there are funds which the club and/or council are available to apply for, incorporating



this 'spectator hard standing' section might be a way to keep the council's costs down.

Kind regards



A Cub Scout Vision for Farnsfield's Green Spaces

Ideas from the Cubs of 1st Farnsfield (Hexgreave)

Adventure & Physical Activity

More excitement, more challenge, more fun!

- Climbing & Parkour
A climbing wall and parkour-style obstacles to build strength, balance, and confidence.
- Wheels & Tracks
A smooth area for roller-skating and a cycle learning track or pump track for bikes and scooters.
- In-Ground Trampolines
Safe, high-energy fun for children of all ages.



Nature & Wildlife

Caring for the environment – the Scout way

- **Nature Walks**
Attractive paths with local flowers and plants to enjoy in every season.
- **Animal-Friendly Spaces**
Bug hotels, hedgehog highways, and wildlife areas – plus a dedicated dog play space to keep parks clean and safe.
- **Water Features**
Sensory features that attract birds, insects, and other wildlife.



Skills, Sports & Community

Spaces to learn, grow, and play together

- **Bushcraft Area**
A semi-wild space for learning outdoor skills, shelter building, and fire safety under supervision.
- **A New Scout Hut**
A modern, sustainable home to support scouting in Farnsfield for years to come.
- **Sports Facilities**
Continued maintenance and inclusion of a cricket pitch for team games and community use.



Our Message

We are proud of our village and excited about its future. These ideas reflect how children use and value Farnsfield's green spaces today – and how they could be even better tomorrow.

The Cubs of 1st Farnsfield (Hexgreave)

Happy to discuss these ideas further or take part in future site visits

Green spaces - Have Your Say



Here is what the Cub pack came back with.

If you want me to print or drop it of, let me know or send me a message

Many thanks,

A Cub Scout Vision for Farnsfield's Green Spaces

Ideas from the Cubs of 1st Farnsfield (Hexgreave)



Adventure & Physical Activity

More excitement, more challenge, more fun!

- Climbing & Parkour
A climbing wall and parkour-style obstacles to build strength, balance, and confidence.
- Wheels & Tracks
A smooth area for roller-skating and a cycle learning track or pump track for bikes and scooters.
- In-Ground Trampolines
Safe, high-energy fun for children of all ages.



Nature & Wildlife

Caring for the environment – the Scout way

- **Nature Walks**
Attractive paths with local flowers and plants to enjoy in every season.
- **Animal-Friendly Spaces**
Bug hotels, hedgehog highways, and wildlife areas – plus a dedicated dog play space to keep parks clean and safe.
- **Water Features**
Sensory features that attract birds, insects, and other wildlife.



Skills, Sports & Community

Spaces to learn, grow, and play together

- **Bushcraft Area**
A semi-wild space for learning outdoor skills, shelter building, and fire safety under supervision.
- **A New Scout Hut**
A modern, sustainable home to support scouting in Farnsfield for years to come.
- **Sports Facilities**
Continued maintenance and inclusion of a cricket pitch for team games and community use.



Our Message

We are proud of our village and excited about its future. These ideas reflect how children use and value Farnsfield's green spaces today – and how they could be even better tomorrow.

The Cubs of 1st Farnsfield (Hexgreave)

Happy to discuss these ideas further or take part in future site visits

----- Forwarded message -----

To: Farnsfield Parish Council

From: 1st Farnsfield Cub Scouts (Hexgreave Pack)

Date: 15th January 2026

Subject: Consultation Response: Green Open Spaces and Parks

Dear Farnsfield Parish Council,

The **1st Farnsfield Cub Scouts (Hexgreave)** recently held a dedicated session to discuss the future of our village's green spaces and parks. As active users of these areas for play, exercise, and badge work, the Cubs are very excited to share their vision for a more inclusive and adventurous Farnsfield.

Below is a summary of the key features and improvements the Cubs believe would make our local parks better for everyone:

Adventure & Physical Activity

The Cubs have a strong desire for more varied physical challenges that go beyond traditional playground equipment:

- **Climbing & Parkour:** A dedicated climbing wall and parkour-style obstacles to help develop strength and coordination.
- **Wheels & Tracks:** A flat-ground area specifically designed for **roller-skating** and a **cycle learning track or pump track** for bikes and scooters.
- **Trampolines:** In-ground trampolines for high-energy play.

Nature & Wildlife

Respecting the "Scout Law" to care for the environment, the Cubs suggested:

- **Nature Walks:** Beautifully landscaped paths featuring local flowers.
- **Animal-Friendly Spaces:** Areas designed to support local wildlife (like bug hotels or hedgehog highways) and a dedicated **dog play area** to keep the rest of the park clean and safe.
- **Water Features:** Elements that provide a sensory experience and attract birds and insects.

Skills & Community

As a growing group, the Cubs identified a need for functional spaces:

- **Bushcraft Area:** A semi-wild space where young people can learn outdoor skills, shelter building, and fire safety in a controlled environment.
- **New Scout Hut:** A modern, sustainable home for 1st Farnsfield to ensure scouting continues to thrive in the village.
- **Sports:** Maintenance and inclusion of a **cricket pitch** for team games.

The Hexgreave Cubs are very proud of their village and hope these ideas help the Council create a space that children of all ages can enjoy. We would be more than happy to discuss these ideas further or participate in any future site visits.

.....

I do not agree with No Mow May in our communal areas and have made complaints for the last two years about it - none of which have been directly addressed. NSDC to whom the FPC contracts to maintain are constantly directed by Lesley Healy and Joyce Shakeshaft not to maintain areas of Hadleigh Park, Reynolds Field and the Acres. The bunds in particular have looked dreadful due to lack of maintenance.

Further, you cannot see where the dog poo is AND the incidence of ticks are heightened due to long grasses.

The woodland paths were not cutback and maintained for the last two years making it very unpleasant to navigate through Millenium Wood which, when maintained, is a lovely walk.

We are still paying NSDC under the contract to maintain - despite being instructed not to do so by certain councillors - and it has been the case that it costs more to deal with the overgrowth than keeping it under control through regular management.

This I have been told direct from NSDC.

It is very unfair that residents on Parfitt Drive have to look at unsightly green areas.

There has been an investigation over certain councillors refusal to maintain communal areas and although the separate complaints

have not been dealt with, the investigation did find that there was no consultation with the village regarding their actions.

Hence my statement that this is a tick box exercise to say they have consulted with the village.

It is worthy of note that the areas near the Tennis Club, however, are well maintained and managed.

As regards the proposal for a roadway linking the bottom of Parfitt Drive to Cotton Mill Lane, this should be completely quashed.

It smacks of total hypocrisy to rip out trees, hedges and wildlife habitat to put in a gated single track rubber access road to accommodate a former councillor not wishing traffic to travel along Cotton Mill Lane and at a possible cost of £200k for highways permissions, the possibility of moving Severn Trent's tank servicing the attenuation pond and costs to do the roadway itself is a ridiculous venture.

.....

I am unable to be present on Sunday but would like to share my views re Hadleigh Park/Reynolds Field.

At the last consultation re these areas, I wrote supporting the possibility of a concrete or hard path leading from the Car Park through Hadleigh Park (avoiding the football pitch) leading through to Reynolds Field and linking up with the short path on The Acres leading to the Skatepark and the bench.

The reason for this is that it is impossible for people with mobility issues and wheelchairs to access these fields and difficult for people with prams/pushchairs - parents/carers who might want to be with an older child using the skatepark. This raises concerns about accessibility and inclusivity as well in my view, as we are denying disabled access to a large area of the park and the fields as a whole which so many people enjoy.

This has also been mentioned to me by residents who have friends/family who are unable to access the areas mentioned.

Good morning, Further to my previous email sent on 6th January and the response received from Peter Leppard regarding the drop in session on Sunday 18th January which I am unable to attend. I put forward a couple of ideas for the use of various areas within our village. The exercise equipment could be updated and moved to near the skate park, offering a facility for either parents/guardians to occupy their time whilst still being adjacent to the skate park. Keeping a watch on younger children or even siblings. The area where the current exercise equipment is on "squirrel park" could be turned into either a sensory area, providing static games and puzzles for all ages but being out in the open air. Rushcliffe Country Park has this facility and it has been a huge success for local families, both young and old. My grandchildren spend a lot of time playing there, it is both fun and educational. or Turn the area into a small cycling proficiency area where even the youngest child can ride their scooters/bikes and learn some road safety. Perhaps have mock traffic lights and pedestrian crossings marked up. Just a couple of ideas to put forward. I hope the residents of Farnsfield take this opportunity to have their say as to how our village green spaces can become more user friendly without destroying the lovely green areas that we are lucky to still have. I thank you for taking the time to read this message.

.....
We did not receive notification in time for us to attend the open meeting on 18/01/26 to register our views on potential developments planned in the village and would like to take this opportunity to formally register the views of myself and my wife. We have been made aware of the proposals for a link road from Parfitt Drive to the Acres. We are both signatories of the petition of 100 plus residents that has previously been submitted to the council and we are totally opposed to this proposal:

- There is already a viable link to the Acres for the small amount of traffic that needs access i.e. infrequent allotment visitors during the week by car and a small number of footballers on Sunday mornings. We know the car traffic to the allotments is minor as we have had an allotment for the last three years.
- Children using the playground at the top of Hadleigh Park often run across and spill onto the road and pose a hazard to drivers. Skatepark users travelling to the park scoot and skateboard down the middle of Parfitt Drive and pose a hazard to drivers. The diversion of more traffic down the road poses a health and safety danger and increases the risk of an accident and injury to a child.

- The expenditure of a large amount of money on a needless link road to stop a small amount of traffic from passing the front of a past councillors house, which it has done for many years, is an abuse of public funds.

Could you please ensure that our views are fed into the council appointed group which ran the session and are captured in the councils records.

.....

Won't get to the drop in but I think the parks and green spaces are well kept and maintained- no mow and use of wild planting works well.

Grand children love the play areas 😊. Sports fields seem well used.

Roadway from Parfitt to sports fields seems inoffensive to me

Hope the session goes well

.....

Notes you're welcome to share or read out

Why I support No Mow May

1. **Food and shelter at exactly the right time.** A short pause in mowing lets ordinary lawn flowers (clover, daisies, dandelions, self-heal etc) bloom, which provides early-season nectar and shelter for pollinators when spring demand is high.
2. **Small changes can have measurable impact.**
 - Butterfly Conservation reported research suggesting that letting parts of gardens grow long (long grass and "wild" patches) can increase butterfly numbers by **up to 93%**, and attract a wider range of species.
 - Imperial College London summarised Plantlife campaign findings that mowing lawns less frequently can provide enough nectar sugar for **ten times** the number of pollinators (bees, butterflies, moths, beetles and others).
3. **We've lost so much meadow habitat already.** Plantlife cites that around **97% of the UK's species-rich grassland has been lost since the 1930s**, so even small pockets of flowering grassland and verges matter.

A practical compromise (so it stays safe and cared-for)

- **Road safety is non-negotiable.** This is compatible with No Mow May. Plantlife's own best-practice guidance explicitly says health and safety are a priority and recommends cutting roadside edges and visibility splays where necessary, while mowing less frequently and later where it is safe to do so.

- **It doesn't have to look scruffy.** A “mosaic” approach works well: mown edges and clear paths to frame the longer areas so it looks intentional and maintained, not neglected.
- **Dog mess is a behaviour issue, not a mowing issue.** Keeping a short-cut path strip plus bins/signage where needed can help usability, without removing the wildlife value everywhere.

Hay fever (a balanced point + my lived experience)

I know this varies by person and can be sensitive. Grass pollen is a major trigger for many people. NHS hay fever guidance advises people not to cut grass or walk on grass during peak symptoms.

Anecdotally, I'm a hay fever sufferer (verging on asthma at times) and, because I live with complex chronic health issues, anything allergy-related can quickly spill over into my whole system and worsen the bigger picture, so this isn't a casual stance for me.

However, I actually feel far less troubled here than at our old house, where the council took a more aggressive approach to verges and routinely sprayed edges. I can't prove cause and effect, but I wanted to add that lived experience because it's easy for the discussion to assume that leaving areas to flower automatically makes things worse for everyone. In my case, it hasn't.

Sources you can cite (titles and organisations)

- Plantlife, “Managing Meadows” (statistic: ~97% loss of species-rich grassland since the 1930s).
- Plantlife, “Road Verge and Green Space Management Best Practice” (safety, visibility splays, mowing later/less where safe).
- Butterfly Conservation, “Boost garden butterfly numbers by up to 93% with one simple step, new study reveals” (19 April 2024).
- Imperial College London, “No Mow May” (2 May 2023) summarising Plantlife findings on nectar sugar and pollinators.
- NHS, “Hay fever” (guidance including not cutting grass / limiting exposure).

.....

Here are some of my thoughts on today's open consultation meeting. Unfortunately I couldn't stay too long due to other commitments so I have documented them below.

I object to a link road being installed for the following reasons

1. A six figure sum is too much to be spent when the village could use it on improving children's play areas by installing disabled and sensory equipment

2. Our open spaces could be enhanced with more children's benches, a nature trail and a dog exercise area
3. The proposed access is on a blind bend which is an accident waiting to happen
4. The majority of traffic going down Quaker lane and tippings lane are delivery vans who will still use these routes for home deliveries
5. A road would potentially facilitate further housing developments adjacent to the Acres playing fields

I am also perplexed about my previous ongoing complaints (which were raised over two years ago), re the lack of management of the bunds on Hadleigh Park - this has still not been resolved

As far as Lady Goodwin park is concerned, which appears to have been unilaterally renamed to Squirrel Park!!), consideration should be given to making that a car park to beget traffic off the road outside of the village centre.

I have lived in Farnsfield for over 55 years.

I have always felt it to be a privilege to be part of this wonderful community. There have been many changes over the years some I have welcomed and others I have disliked particularly destruction of green spaces.

.....
One aspect that has always been essential for me has been the protection of the natural areas of the village. I and my family have gained pleasure from the children's parks, playing fields and sports facilities that we are so fortunate to have and that have been maintained and respectfully developed over the years by parish councils and parishioners. I hope that this continues. I would say that in addition we are lucky to have the trail and footpaths and the wider farmland around us.

For the purpose of your invitation I wish to comment on the area of Hadleigh Park the Acres and millennium wood. For me this comes under the name the Acres.

I genuinely love this part of the village. It provides the opportunity to walk alone or with others, meet friends and pass the time of day with

strangers, walk our dogs watch the football, talk to the allotment holders and even marvel at the skateboarders.

Last year I was hoping to put forward a proposal to the Parish Council to develop a walking for health trail around this area. This has been overtaken by the need to protect it.

I am dismayed that a roadway from Parfitt Drive to Reynolds field is being considered. Nothing I have read or heard has convinced me this is necessary both in terms of need, destruction of the natural world, cost and conflict. If and when the Parish Council runs a formal consultation I will contribute in any way I can to oppose this. As the meeting on 18th is informal I will stick to my personal experience to explain my opposition.

I walk the acres several times a day alone with my dogs or with my family and friends in all weathers. The area that will be destroyed by this access road is an established home to small animals including hedgehogs mice rats. I have regularly heard and seen bats and owls. Flocks of blue tits, long tailed tits, chaffinches, robins, black birds crows to name but a few. Frogs and insects etc plus it's a lovely tumble of natural undergrowth under the many trees. I have observed all this personally and left water near by over the summer for the birds and animals which was well used and provided opportunities for me to observe the activity. Why would anyone allow this to be damaged is beyond me?

I believe this road proposal is to reduce traffic on cotton mill lane? The traffic on cotton mill is minimal to non existent the majority of the time. I made a point of counting the cars over a week. Most were parked over the week. There were less than 10.

On football match days there are around twenty. You can see how minimal the numbers are by the area they park near the football field. There are no wheel ruts, mud and damage from the cars even during the very wet area we have had. Why would such huge amount of money be used for this?

Can't we encourage and help people to avoid the use of motorised vehicles? My priority would be accessibility for the less able. There are many examples of ways of doing this without building a road. Dartmoor miles without stiles for example. <https://www.dartmoor.gov.uk/enjoy-dartmoor/outdoor-activities/accessible-dartmoor/miles-without-stiles> I have personal experience of using this. It's superb.

I would like to offer an invitation to any parish councillors who might like to walk with me with or without my dogs to discuss this proposed development with me. I can show why I oppose it so vehemently and am happy to listen to other views and rationals. I'd also enjoy exploring the opportunity for a walking for health accessible trail on this area. The opportunity to help improvement and maintenance of local physical and mental health, at a minimal cost are huge. Please consider this rather than a new access road.

I look forward to hearing from you.

In hope